

# TL50 Select Process Data Function

---

January 8<sup>th</sup>, 2026

This document covers the installation and use of a function for Siemen's TIA Portal software package. This function handles cyclic IO-Link Process Data Out to a Banner TL50 Select light via an IO-Link Master from a Siemens PLC. The function covers parsing and display of the TL50 sensor Process Data Out.

## **Components**

Banner TL50 Library V16.zal16

There are two methods for the process data. The first is used when creating a connection to Banner's IO-Link masters. The second set of instructions are for systems using other manufacturer's IO-Link masters.

### **Installation Instructions**

1. Open a project.
2. Go to the Open Global Library option in the Libraries tab in TIA Portal v16 or greater.



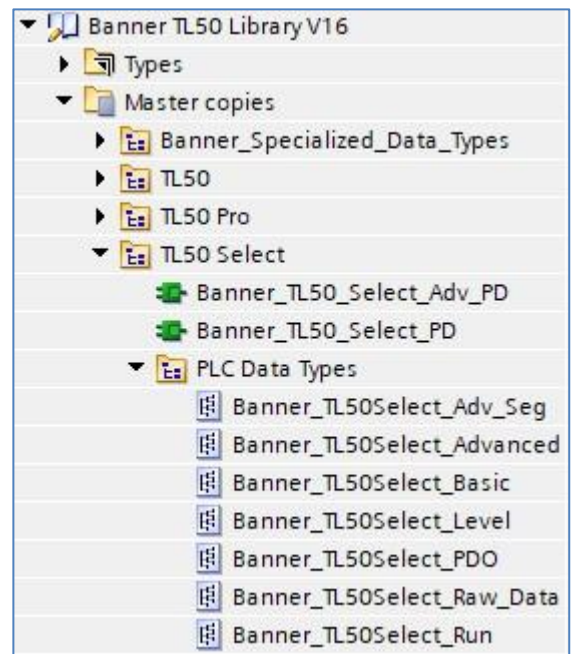
3. Switch the “Files of type” to Compressed libraries. Go to the location of the compressed library.
4. Press the Open button and the library will be uncompressed and opened.
5. The library is now accessible in the Libraries tab in v16 or greater.

**Setup of TL50 Select with a Banner DXMR**

1. Go to Device and Networks to configure the DXMR. Add the DXMR if it has yet to be added to the system.
2. Add Banner IO-Link Master Info to Slot 1. This sets the DXMR for IO-Link mode.
3. Open the IO-Link Generic Devices and select the proper module. The 16/16 byte is required for TL50 Select. Make note of the Q address for the Slot 2 which represents Port 1. Slot 2 starts are 1 for outputs. The other number needed is Q3. The data for the port start at that point (I3). The previous two bytes Port Control.

Module	Rack	Slot	I address	Q address	Type
▼ dxm	0	0			1-port Device
▶ Interface	0	0 X1			dxm
Banner IO-Link Master Info_1	0	1	1...9		Banner IO-Link Master Info
IO-Link In/Out 16/16 Byte + Status_1	0	2	10...29	1...30	IO-Link In/Out 16/16 Byte + Status

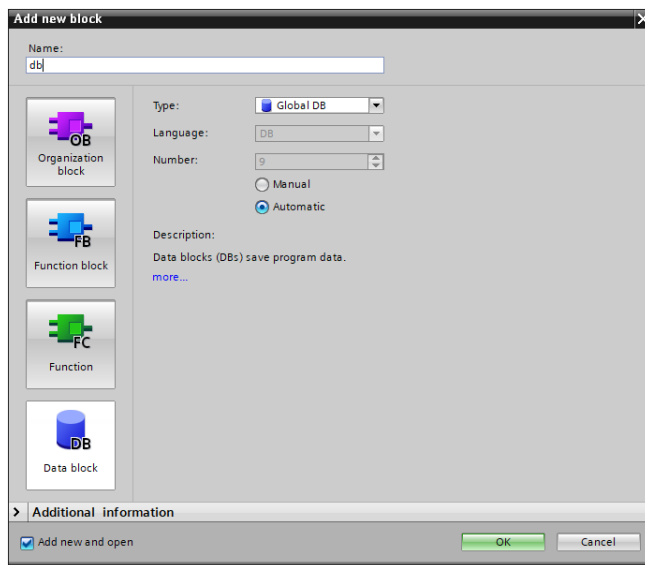
4. Drag the necessary tag from Banner\_Specialized\_Data\_Types. The tag used in this example is “Banner\_16out”. This tag represents the full raw process data along with port status information.
5. Drag the necessary files from the TL50 Select Folder.
  - a. Move Banner\_TL50Select\_Adv\_Seg, Banner\_TL50Select\_Advanced, Banner\_TL50Select\_Basic, Banner\_TL50Select\_Level, Banner\_TL50Select\_PDO, Banner\_TL50Select\_Raw\_Data, and Banner\_TL50Select\_Run to the PLC Data Types area.
  - b. Move Banner\_TL50\_Select\_PD and Banner\_TL50\_Select\_Adv\_PD to the Program Blocks area.



6. Go to PLC Tags. Create two tags. One tag is for the full data structure while the second creates a tag to represent the raw Process Data from the IO-Link Master. In this example, Tag table\_1 was created, then the tag “TL50 Select IOLM1 01 PDO” was created using a Data Type of “Banner\_32out”. This naming convention calls out the type of device in question as well as the specific IO-Link Master and port number where the sensor is connected. A different IO-Link Master might be named IOLM2 or IOLM3, for instance, and other specific sensors may be connected to different port numbers. The “Q” address found in step 2 (%Q1) is tied to this new tag. The second is “TL50 Select IOLM1 01 outRaw” and uses the “Q” address found in step 2 (%Q3). This is the tag that will be used in the Function block.

Name	Data type	Address
▶ TL50 Select IOLM1 01 PDO	"Banner_16Out"	%Q1.0
▶ TL50 Select IOLM1 01 outRaw	"Banner_TL50Select_Raw_Data"	%Q3.0

7. Go to Program blocks. Add a new Data block if necessary. In this example the new data block is named “db”.



8. In the new data block, create a new tag to represent the parsed Process Data Output for our TL50 Select. The tag name again calls out the type of sensor, the IO-Link Master, and the port number. Use the data type “Banner\_TL50Select\_PDO” for the new tag.

Name	Data type
▼ Static	
■ ▼ TL50 Select IOLM1 01 PD	"Banner_TL50Select_PDO"
■ ▶ Advanced Mode	"Banner_TL50Select_Advanced"
■ ▶ Basic Mode	"Banner_TL50Select_Basic"
■ ▶ Level Mode	"Banner_TL50Select_Level"
■ ▶ Run Mode	"Banner_TL50Select_Run"
■ Index	Int

8. Add the “Banner\_TL50\_Select\_PD” function to an OB ladder. Link the “PDO” to the raw process data variable from step 5. The tag name again calls out the type of device, IO-Link Master, and the port number. Use the variable was called “TL50 Select IOLM1 01 outRaw” in this example. The “TL50PDO” needs to be linked to the variable created in step 7. It was called “TL50 Select IOLM1 01 PD” for this example.

The last two variables, “Operational Mode” and “Segments”, allow the function to correctly interpret the Process Data Out. In the case of the TL50 Select , there are four user-selected modes for the Process Data Out. This function needs to know what choice has been made in the TL50 Pro Select for this Operational Mode variable.

There are two ways to achieve this goal. We can simply type in the correct number for Operational Mode (see Fig. 1), or we can link this TL50 Pro Select Process Data Function to the TL50 Pro Select Parameter Data Function Block (see Fig. 2). See Appendix A for more information about TL50 Pro Select Process Data Out.

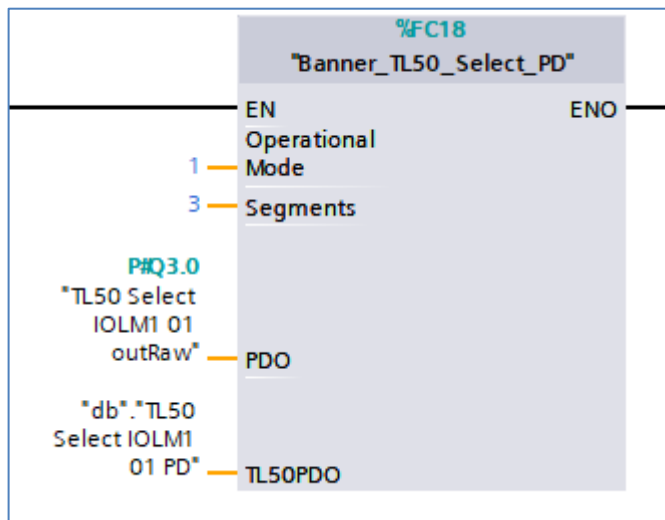


Figure 1: Hand type correct number for Operational Mode

**NOTE:** if you type in the incorrect number (i.e. it does not match the tower light’s current Operational Mode configuration) you will get incorrectly displayed Process Data Out information.

**Operational Mode:** the options here are “0” (Basic Mode; on/off/flash/animation state for up to 10 segments plus audible), “1” (Advanced Mode; full RGB control off all 10 segments), “2” (Run Mode; a situation where the entire tower light acts as one device), and “3” (Level Mode); where the entire tower light behaves as a level indicator). The default is “0”.

**Segments:** this is the number of segments in the tower light (excluding audible segment, if present).

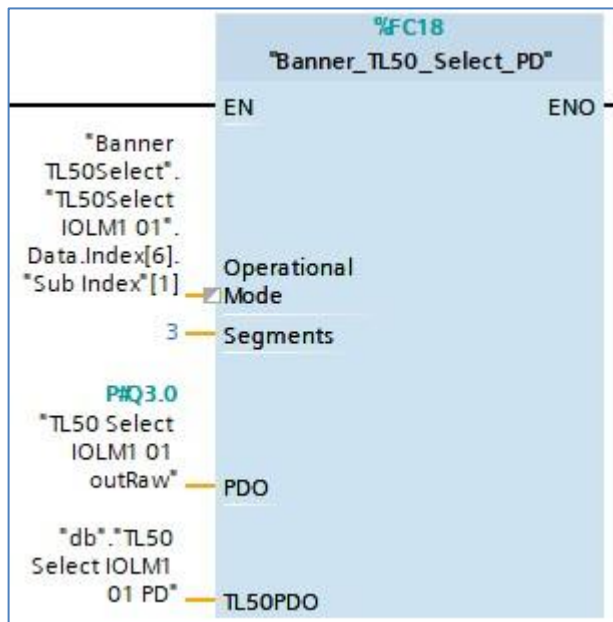


Figure 2: Linking Operational Mode variable to TL50 Pro Select Parameter Data Function Block

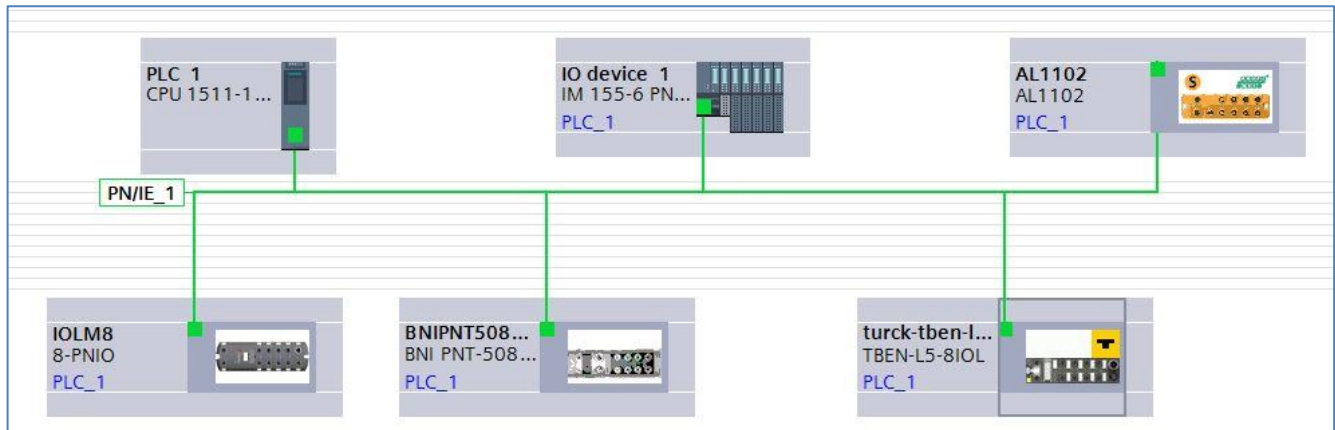
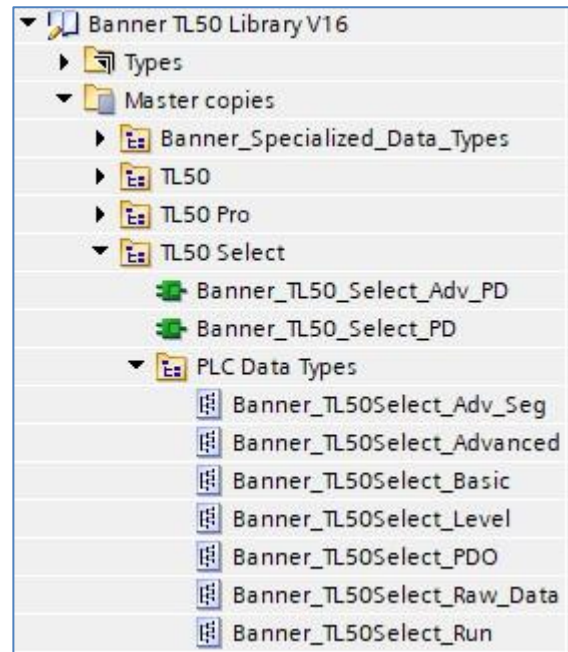
9. The final step is to configure the IO-Link output control. This is done by sending a 1 to Port Control and a 2 to Port Config. Both parameters are part of the tag created in step 6 "TL50 Select IOLM1 01 PDO".



10. Process Data Setup is complete.
11. Compile and download the configuration to the PLC, then go online. Open the "db" data block and click Monitor all. The TL50 Select can be controlled now.

**Setup of TL50 Select with other IO-Link Masters**

1. The Banner TL50 Library will now be in the Global Library List. Expand the Master copies section.
2. Drag Banner\_TL50\_Select\_Advanced\_PD and Banner\_TL50\_Select\_PD to the Program Blocks area under your PLC.
3. Drag Banner\_TL50Select\_Adv\_Seg, Banner\_TL50Select\_Advanced, Banner\_TL50Select\_Basic, Banner\_TL50Select\_Level, Banner\_TL50Select\_PDO, Banner\_TL50Select\_Raw\_Data, and Banner\_TL50Select\_Run to the PLC Data Types area under your PLC.
4. Go to Devices and networks to configure the system as necessary. Below is an example of what a configuration might look like. This example shows 5 different IO-Link Masters connected to the same PLC.

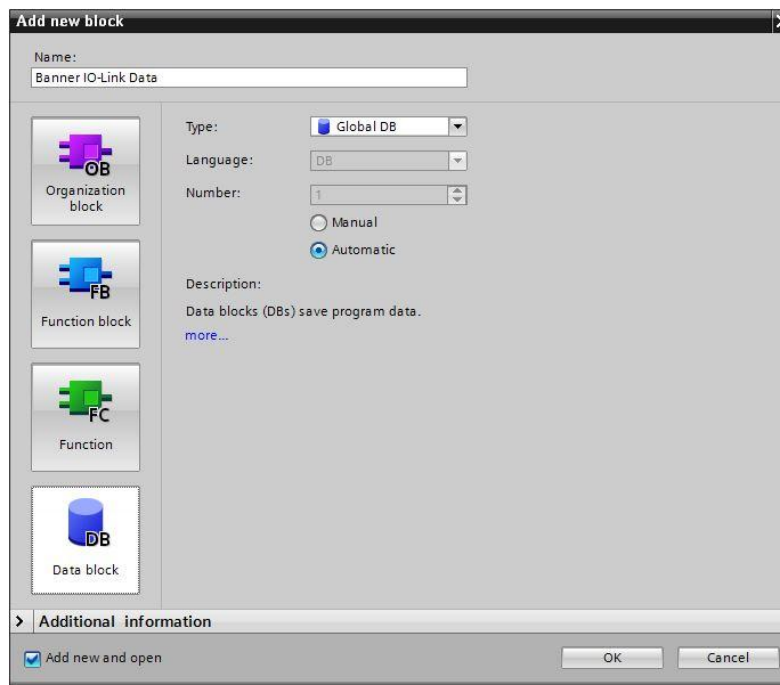


5. Click on the relevant device and configure the IO-Link Master as necessary. Refer to the documentation for the IO-Link Master. Recall that a TL50 Pro Select requires 13 bytes of space for the Process Data.
6. Record the “Q” address where this TL50 Pro Select Process Data is to be stored, as the address will be required in the next step. In this example, 13 bytes of Process Data Out for port 1 on the IO-Link Master will be stored starting at Q3.

7. Go to PLC Tags. Add a new tag table, then create a new tag to represent the raw Process Data Out to be sent to the IO-Link Master. In this example, Tag table\_1 was created, then the tag "TL50 Select IOLM1 01 outRaw" was created using a Data Type of "Banner\_TL50Select\_Raw\_Data". This naming convention calls out the type of sensor in question as well as the specific IO-Link Master and port number where the sensor is connected. A different IO-Link Master might be named IOLM2 or IOLM3, for instance, and other specific sensors may be connected to different port numbers. The "Q" address found in step 6 is tied to this new tag.

▶ TL50 Select IOLM1 01 outRaw	"Banner_TL50Select_Raw_Data"	%Q3.0
-------------------------------	------------------------------	-------

8. Go to Program blocks. Add a new Data block if necessary. In this example the new data block is named "Banner IO-Link Data".





9. In the new data block, create a new tag to represent the parsed Process Data In for our TL50 Select. The tag name again calls out the type of sensor, the IO-Link Master, and the port number. Use the data type “Banner\_TL50Select\_PDO” for the new tag.

Name	Data type
▼ Static	
■ ▼ TL50 Select IOLM1 01 PD	"Banner_TL50Select_PDO"
■ ▶ Advanced Mode	"Banner_TL50Select_Advanced"
■ ▶ Basic Mode	"Banner_TL50Select_Basic"
■ ▶ Level Mode	"Banner_TL50Select_Level"
■ ▶ Run Mode	"Banner_TL50Select_Run"
■ Index	Int

Add the “Banner\_TL50\_Select\_PD” function to an OB ladder. Link the “PDO” to the raw Process Data variable from step 7. Link “TL50PDO” to the parsed Process Data variable from step 9.

The last two variables, “Operational Mode” and “Segments”, allow the function to correctly interpret the Process Data Out. In the case of the TL50 Pro Select , there are four user-selected modes for the Process Data Out. This function needs to know what choice has been made in the TL50 Pro Select for this Operational Mode variable.

There are two ways to achieve this goal. We can simply type in the correct number for Operational Mode (see Fig. 1), or we can link this TL50 Pro Select Process Data Function to the TL50 Pro Select Parameter Data Function Block (see Fig. 2). See Appendix A for more information about TL50 Pro Select Process Data Out.

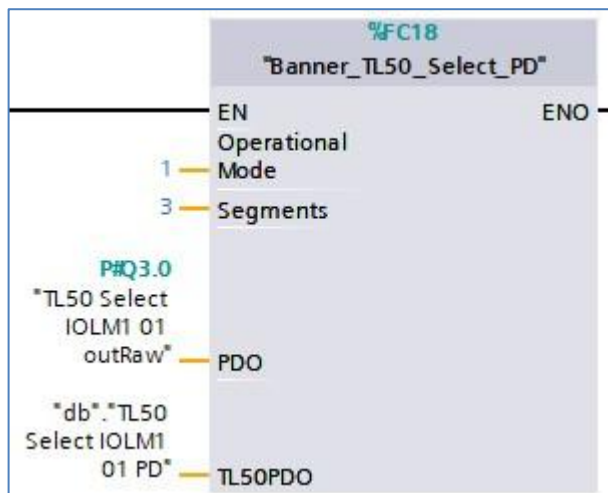


Figure 3: Hand type correct number for Operational Mode

**NOTE:** if you type in the incorrect number (i.e. it does not match the tower light’s current Operational Mode configuration) you will get incorrectly displayed Process Data Out information.

**Operational Mode:** the options here are “0” (Basic Mode; on/off/flash/animation state for up to 10 segments plus audible), “1” (Advanced Mode; full RGB control off all 10 segments), “2” (Run Mode; a situation where the entire tower light acts as one device), and “3” (Level Mode; where the entire tower light behaves as a level indicator). The default is “0”.

**Segments:** this is the number of segments in the tower light (excluding audible segment, if present).

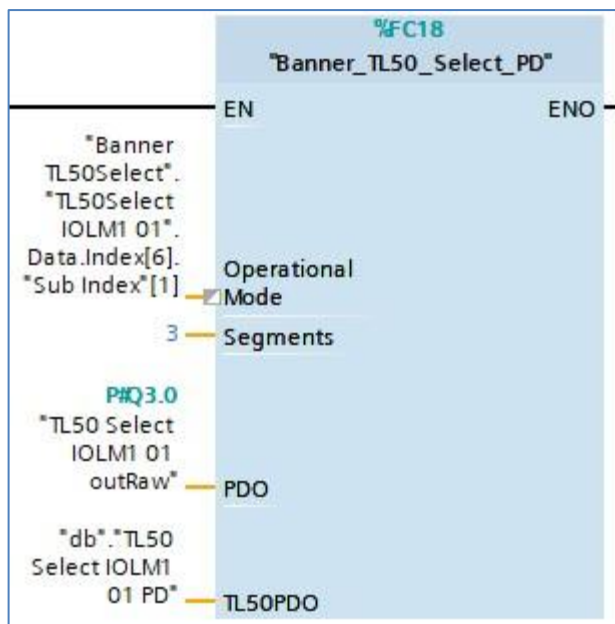


Figure 4: Linking Operational Mode variable to TL50 Pro Select Parameter Data Function Block

10. Process Data setup is complete.

11. Compile and download the configuration to the PLC, then go online. Open the “Banner IO-Link Data” data block and click Monitor all. You should see parsed TL50 Pro Select Process Data Out, like that shown below.

▼ TL50 Select IOLM1 01 PD	"Banner_TL50Select_PDO"	
■ ▶ Advanced Mode	"Banner_TL50Select_Advanced"	
■ ▼ Basic Mode	"Banner_TL50Select_Basic"	
■ Audible State	USInt	0
■ Segment 1	USInt	1
■ Segment 2	USInt	0
■ Segment 3	USInt	0
■ Segment 4	USInt	0
■ ▶ Level Mode	"Banner_TL50Select_Level"	
■ ▶ Run Mode	"Banner_TL50Select_Run"	

Figure 5: Basic Mode Process Data Out (Operational Mode = 0)

▼ TL50 Select IOLM1 01 PD	"Banner_TL50Select_PDO"	
■ ▼ Advanced Mode	"Banner_TL50Select_Advanced"	
■ ▼ Segment	Array[1..4] of "Banner_TL50Select_Ad..."	
■ ▼ Segment[1]	"Banner_TL50Select_Adv_Seg"	
■ Color 1	USInt	9
■ Color 1 Intensity	USInt	0
■ Animation Type	USInt	1
■ Speed	USInt	0
■ Pulse Pattern	USInt	0
■ Color 2	USInt	0
■ Color 2 Intensity	USInt	0
■ ▶ Segment[2]	"Banner_TL50Select_Adv_Seg"	
■ ▶ Segment[3]	"Banner_TL50Select_Adv_Seg"	
■ ▶ Segment[4]	"Banner_TL50Select_Adv_Seg"	
■ Audible State	USInt	0
■ ▶ Basic Mode	"Banner_TL50Select_Basic"	
■ ▶ Level Mode	"Banner_TL50Select_Level"	
■ ▶ Run Mode	"Banner_TL50Select_Run"	

Figure 6: Advanced Mode Process Data Out (Operational Mode = 1)

▼ TL50 Select IOLM1 01 PD	"Banner_TL50Select_PDO"	
■ ▶ Advanced Mode	"Banner_TL50Select_Advanced"	
■ ▶ Basic Mode	"Banner_TL50Select_Basic"	
■ ▶ Level Mode	"Banner_TL50Select_Level"	
■ ▼ Run Mode	"Banner_TL50Select_Run"	
■ Animation	USInt	2
■ Color 1	USInt	5
■ Color 1 Intensity	USInt	0
■ Speed	USInt	0
■ Pulse Pattern	USInt	0
■ Color 2	USInt	0
■ Color 2 Intensity	USInt	0
■ Direction	USInt	0
■ Audible State	USInt	0

Figure 7: Run Mode Process Data Out (Operational Mode = 2)

▼ TL50 Select IOLM1 01 PD	"Banner_TL50Select_PDO"	
■ ▶ Advanced Mode	"Banner_TL50Select_Advanced"	
■ ▶ Basic Mode	"Banner_TL50Select_Basic"	
■ ▼ Level Mode	"Banner_TL50Select_Level"	
■ Audible State	Byte	16#00
■ Level Mode Value	UInt	0

Figure 8: Level Mode Process Data Out (Operational Mode = 3)

**Appendix A****TL50 Pro Select Process Data Out**

The TL50 Pro Select has 13 bytes of Process Data Out, mapped into 4 different modes, as shown below.

This Process Data is mapped to a specific group of PROFINET addresses. The 104-bits of Process Data encode many separate pieces of information, as shown below.

This function intelligently parses this Process Data into its component pieces.

First is the Basic mode (mode 0). This controls the basic on/off/flash/animation state of each segment and the off/on/pulse/sos state of the audible (if present).

**ProcessDataOut "Process Data Out Basic" id=V\_Pd\_OutBasic**

bit length: 104

data type: 104-bit Record

subindex	bit offset	data type	allowed values	default value	acc. restr.	mod. other var.	excl. from DS	name	description
1	88	2-bit UInteger	0 = Off, 1 = On, 2 = Pulsed, 3 = SOS Pulse					Audible State	The state of the audible segment
2	96	2-bit UInteger	0 = Off, 1 = On, 2 = Flash, 3 = Animation					Segment 1	The state of the segment. Related parameters defined in Basic Segment Parameter Data
3	98	2-bit UInteger	0 = Off, 1 = On, 2 = Flash, 3 = Animation					Segment 2	The state of the segment. Related parameters defined in Basic Segment Parameter Data
4	100	2-bit UInteger	0 = Off, 1 = On, 2 = Flash, 3 = Animation					Segment 3	The state of the segment. Related parameters defined in Basic Segment Parameter Data
5	102	2-bit UInteger	0 = Off, 1 = On, 2 = Flash, 3 = Animation					Segment 4	The state of the segment. Related parameters defined in Basic Segment Parameter Data

Here is the information for 1 segment (out of 4) for Advanced mode (mode 1). This mode grants the user full control over every segment of the TL50 Pro Select.

#### ProcessDataOut "Process Data Out Advanced" id=V\_Pd\_OutAdvanced

bit length: 104

data type: 104-bit Record

subindex	bit offset	data type	allowed values	default value	acc. restr.	mod. other var.	excl. from DS	name	description
1	96	2-bit UInteger	0 = Off, 1 = On, 2 = Pulsed, 3 = SOS Pulse					Audible State	The state of the audible segment
2	92	3-bit UInteger	0 = High, 1 = Low, 2 = Medium, 3 = Off, 4 = Custom					Segment 1 Color 1 Intensity	The Intensity of Color 1, Custom Intensity defined in Parameter Data
3	88	4-bit UInteger	0 = Green, 1 = Red, 2 = Orange, 3 = Amber, 4 = Yellow, 5 = Lime Green, 6 = Spring Green, 7 = Cyan, 8 = Sky Blue, 9 = Blue, 10 = Violet, 11 = Magenta, 12 = Rose, 13 = White, 14 = Custom 1, 15 = Custom 2					Segment 1 Color 1	The main color of the Animation. Custom Colors are defined in Parameter data
4	85	3-bit UInteger	0 = Normal, 1 = Strobe, 2 = Three Pulse, 3 = SOS, 4 = Random					Segment 1 Pulse Pattern	The pattern of Animation
5	83	2-bit UInteger	0 = Medium, 1 = Fast, 2 = Slow, 3 = Custom					Segment 1 Speed	The speed of the Animation
6	80	3-bit UInteger	0 = Off, 1 = Steady, 2 = Flash, 3 = Two Color Flash, 4 = 50/50, 5 = Intensity Sweep					Segment 1 Animation Type	The Animation type
7	76	3-bit UInteger	0 = High, 1 = Low, 2 = Medium, 3 = Off, 4 = Custom					Segment 1 Color 2 Intensity	The Intensity of Color 2, Custom Intensity defined in Parameter Data
8	72	4-bit UInteger	0 = Green, 1 = Red, 2 = Orange, 3 = Amber, 4 = Yellow, 5 = Lime Green, 6 = Spring Green, 7 = Cyan, 8 = Sky Blue, 9 = Blue, 10 = Violet, 11 = Magenta, 12 = Rose, 13 = White, 14 = Custom 1, 15 = Custom 2					Segment 1 Color 2	The secondary color of the Animation. Only used if Animation has two colors. Custom Colors are defined in Parameter data

January 8<sup>th</sup>, 2026

## TL50 Select Process Data Function

Here is Run mode (mode 2).

ProcessDataOut "Process Data Out Run Mode" id=V_Pd_OutRunMode									
bit length: 104 data type: 104-bit Record									
subindex	bit offset	data type	allowed values	default value	acc. restr.	mod. other var.	excl. from DS	name	description
1	24	4-bit UInteger	0 = Off, 1 = Steady, 2 = Flash, 3 = Two Color Flash, 4 = 50/50, 5 = Intensity Sweep, 6 = Scroll, 7 = Bounce, 8 = Color Spectrum, 9 = Demo					Animation	The Animation type
2	32	4-bit UInteger	0 = Green, 1 = Red, 2 = Orange, 3 = Amber, 4 = Yellow, 5 = Lime Green, 6 = Spring Green, 7 = Cyan, 8 = Sky Blue, 9 = Blue, 10 = Violet, 11 = Magenta, 12 = Rose, 13 = White, 14 = Custom 1, 15 = Custom 2					Color 1	The main color of the Animation. Custom Colors are defined in Parameter data
3	40	3-bit UInteger	0 = High, 1 = Low, 2 = Medium, 3 = Off, 4 = Custom					Color 1 Intensity	The Intensity of Color 1, Custom Intensity defined in Parameter Data
4	48	2-bit UInteger	0 = Medium, 1 = Fast, 2 = Slow					Speed	The speed of the Animation
5	56	3-bit UInteger	0 = Normal, 1 = Strobe, 2 = Three Pulse, 3 = SOS, 4 = Random					Pulse Pattern	The pattern of Animation
6	64	4-bit UInteger	0 = Green, 1 = Red, 2 = Orange, 3 = Amber, 4 = Yellow, 5 = Lime Green, 6 = Spring Green, 7 = Cyan, 8 = Sky Blue, 9 = Blue, 10 = Violet, 11 = Magenta, 12 = Rose, 13 = White, 14 = Custom 1, 15 = Custom 2					Color 2	The secondary color of the Animation. Only used if Animation has two colors. Custom Colors are defined in Parameter data
7	72	3-bit UInteger	0 = High, 1 = Low, 2 = Medium, 3 = Off, 4 = Custom					Color 2 Intensity	The Intensity of Color 2, Custom Intensity defined in Parameter Data
9	88	Boolean	false = Up, true = Down					Direction	The Direction of Animation
10	96	2-bit UInteger	0 = Off, 1 = On, 2 = Pulsed, 3 = SOS Pulse					Audible State	The state of the audible segment

Here is Level mode (mode 3).

ProcessDataOut "Process Data Out Level Mode" id=V_Pd_OutLevelMode									
bit length: 104 data type: 104-bit Record									
subindex	bit offset	data type	allowed values	default value	acc. restr.	mod. other var.	excl. from DS	name	description
1	72	2-bit UInteger	0 = Off, 1 = On, 2 = Pulsed, 3 = SOS Pulse					Audible State	The state of the audible segment
2	88	16-bit UInteger						Level Mode Value	Value describing the level of the device, range determined in Level Mode Parameter Data